



Queens Road, Buckhurst Hill, IG9

BUTLER  STAG



Location, location, location! A spacious two double-bedroom apartment in the heart of Buckhurst hill.



Leasehold - Share of

- Two Double Bedrooms With Fitted Wardrobes
- Off Street Parking And Garage
- Share Of Freehold
- 7 Minute Walk To Central Line Station
- Fantastic Location Just Off Queens Road
- Immaculately Presented
- Bright Aand Spacious Throughout

Welcome to Malborough Court, a well-proportioned first-floor apartment offering comfortable and spacious living. This home features two generously sized bedrooms, a bright and airy lounge/dining area, and a well-equipped kitchen. The bathroom is conveniently positioned alongside useful storage spaces, ensuring practicality and organization.

Additionally, the property benefits from a private garage, providing secure parking or extra storage space. With a thoughtful layout and ample living space, this residence is ideal for those seeking a comfortable and stylish home.

Located in a desirable area, Malborough Court offers both convenience and tranquillity, making it a fantastic opportunity for homeowners and investors alike.

Life in Buckhurst Hill offers the perfect blend of suburban charm and city convenience, with Queens Road at its heart. This bustling high street is the focal point of the community, lined with an array of boutique shops, independent cafés, and popular restaurants that create a vibrant yet relaxed atmosphere.

Whether you're enjoying a leisurely brunch, browsing stylish homeware stores, or picking up fresh produce from the local delis, Queens Road provides a welcoming and friendly experience. With excellent transport links, including Buckhurst Hill Underground Station on the Central Line, commuting to London is seamless, while nearby Epping Forest offers a peaceful escape for nature lovers. The area's strong sense of community, excellent schools, and picturesque surroundings make Buckhurst Hill a highly sought-after location for families, professionals, and retirees alike.



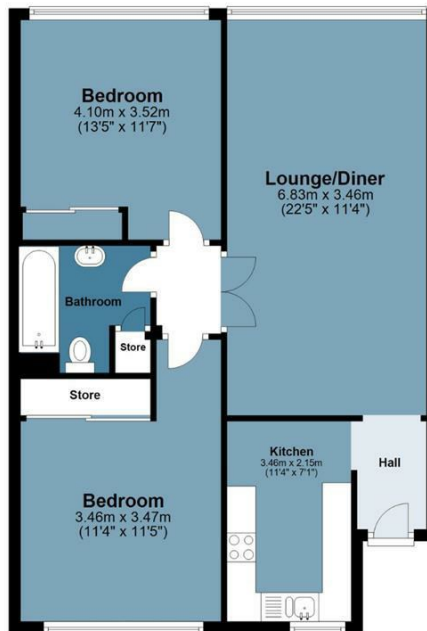


Malborough Court

Approx. Gross Internal Area 93.3 sq. metres (1004.1 sq. feet)

First Floor

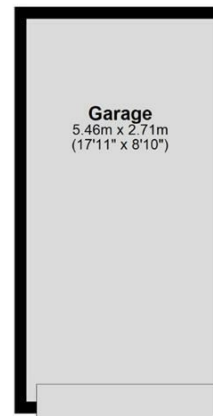
Approx. 71.5 sq. metres (769.9 sq. feet)



BUTLER & STAG

Garage

Approx. 21.8 sq. metres (234.2 sq. feet)



Measurements are approximate and for illustration purposes only. While we do not doubt the accuracy and completeness, we advise you conduct a careful independent assessment of the property to determine monetary value
© @modephoto.uk www.modephoto.co.uk

IMPORTANT NOTICE - These particulars have been prepared in good faith and they are not intended to constitute part of an offer or contract. We have not performed a structural survey on this property and the services, appliances and specific fittings have not been tested. All photographs, measurements, floor plans and distances referred to are given as a guide and should not be relied upon.

BUTLER & STAG

☎ 020 8504 9000

🏠 184 Queen's Road, Buckhurst Hill, IG9 5BD

✉ buckhursthill@butlerandstag.com

www.butlerandstag.uk